


页码
Page
Seite

RZ 500, RZ 320	3/2 3/6	常规特征 圆拱方形液压缸	General parameters Circular block cylinder	Allgemeine Merkmale Rundblockzylinder
	3/14 3/18	附件 备件	Accessories Spare parts	Zubehör Ersatzteile

圆拱方形液压缸

Circular block cylinder

Rundblockzylinder



100%
Quality
© AMP 11/01/13

常规特征

General parameters
Allgemeine Merkmale



- 最大工作压力 500 bar
- 结构紧凑
- 活塞杆均有做硬化和研磨处理
- 供货时间短 - 丰富的库存
- Ø 16 mm 至 Ø 100 mm 的活塞直径
- 不同的标准冲程
- 不同的固定方式
- 与方形缸的结构一样

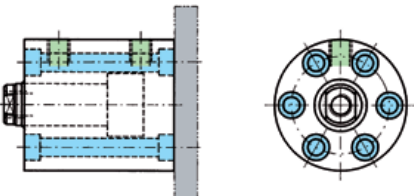
- Maximum operating pressure 500 bar
- Compact design
- Piston rods ground and hardened
- Short delivery times – large stock range
- Piston diameters from Ø 16 mm to Ø 100 mm
- Various standard strokes
- Multiple mounting options available
- Structure as for block cylinder

- Maximaler Betriebsdruck 500 bar
- Kompakt bauend
- Kolbenstangen gehärtet und geschliffen
- Kurze Lieferzeiten – großes Lagerprogramm
- Kolbendurchmesser von Ø 16 mm bis Ø 100 mm
- Verschiedene Standardhübe
- Verschiedene Befestigungsarten
- Wie Blockzylinder aufgebaut

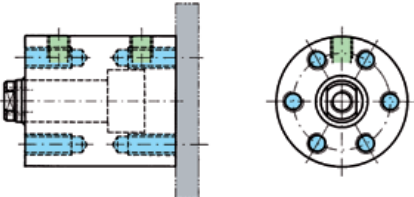
订购名称 (示例) Order specification (example) Bestellbezeichnung (Beispiel)

RZ 500 .50/32. 01. 201. 50

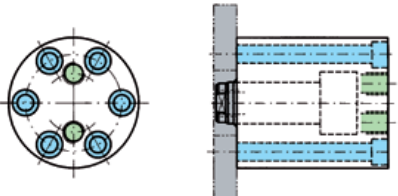
活塞 Ø Piston Ø Kolben Ø	活塞杆 Ø (d) Rod Ø (d) Stangen Ø (d)	结构 Style Bauform	功能类型 Operation mode Funktionsart	标准行程 Standard stroke Standardhub	可选配件 Option Option										
50	32	01	201	50											

01  3/6

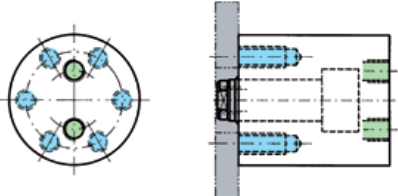
备有库存
From stock
Ab Lager

02  3/6

备有库存
From stock
Ab Lager

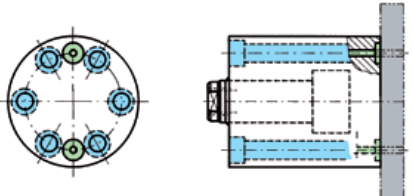
03  3/8

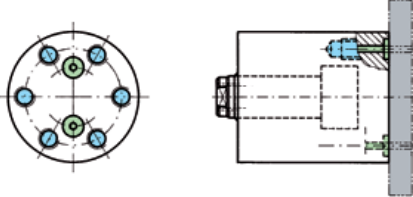
备有库存
From stock
Ab Lager

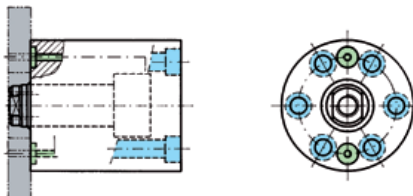
04  3/8

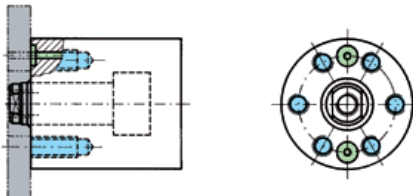
备有库存
From stock
Ab Lager

 连接 Connection Anschluss  固定方式 Mounting mode Befestigungsart

05  3/10

06  3/10

07  3/12

08  3/12

功能类型 Operation mode Funktionsarten

201  双作用式
double-acting
doppeltwirkend

快速发货方案 Quick Delivery Programme Schnelllieferprogramm



选择该系列的油缸可以享有更多的优惠并且交期会更快，有些型号我们都备有库存。
Selected cylinders of this series are very inexpensive and can be delivered fast or are available from stock.
Ausgewählte Zylinder dieser Baureihe sind besonders günstig, schnell bzw. ab Lager verfügbar.

行程 Stroke Hub	活塞 Ø Piston Ø Kolben Ø						
	16	20	25	32	40	50	63
16	✓						
20		✓	✓				
25				✓	✓	✓	
30							✓
50	✓	✓	✓	✓	✓	✓	
63							✓

尺寸单位：毫米
Dimensions in mm
Alle Maße in mm



Viton® 密封件 Viton® seal option Dichtungsvariante Viton®

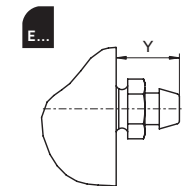
材料: Viton® (HDF 液体) 或者温度范围不超过 180°C
 Material: Viton® (HDF fluids) or temperatures up to 180 °C
 Werkstoff: Viton® (HDF-Flüssigkeiten) oder Temperaturbereich bis 180 °C



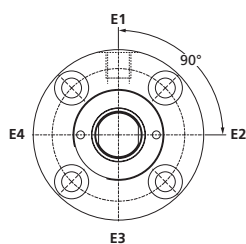
排气 Vented Entlüftung

排气位置 RZ 500 / RZ 320 功能类型 201
 Positions for venting – RZ 500 / RZ 320 function type 201
 Positionen für die Entlüftung – RZ 500 / RZ 320 Funktionsart 201

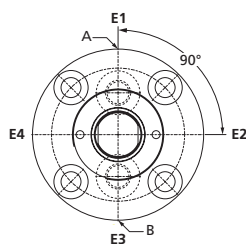
活塞 Ø Piston Ø Kolben Ø	Ø 16 – Ø 20				Ø 25 – Ø 100					
位置 Page Seite	E1	E2	E3	E4	E1	E2	E3	E4	E5	E6
结构 Style Bauform	01, 02	-	✓	✓	✓	-	✓	✓	✓	✓
	03, 04	-	✓	-	✓	✓*	✓	✓	-	✓
	05, 06	-	✓	-	✓	-	✓	✓	-	✓
	07, 08	-	✓	-	✓	-	✓	✓	-	✓
Y	12 mm				12 mm					



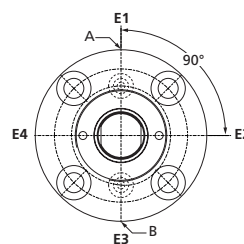
*RZ 500 Ø 80 缸径以及 RZ 320 (所有缸径) 无法实现
 *With RZ 500 Ø 80 and RZ 320 (all Ø) not possible
 *Bei RZ 500 Ø80 und RZ 320 (alle Ø) nicht möglich



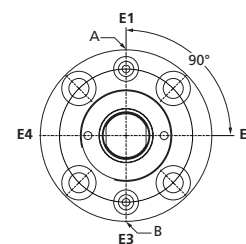
结构 Style Bauform
01, 02



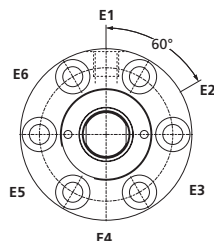
结构 Style Bauform
03, 04



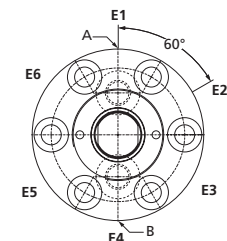
结构 Style Bauform
05, 06



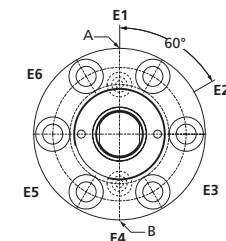
结构 Style Bauform
07, 08



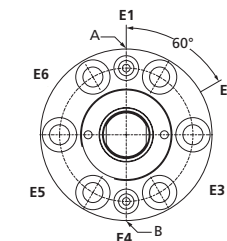
结构 Style Bauform
01, 02



结构 Style Bauform
03, 04



结构 Style Bauform
05, 06

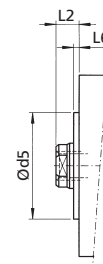


结构 Style Bauform
07, 08



带定心轴环 With centering collar Mit Zentrierbund

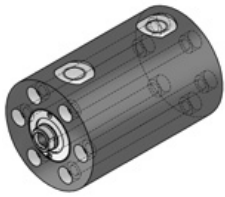
定心轴环 centering collar Zentrierbund	活塞 Ø Piston Ø Kolben Ø							
	16	25	32	40	50	63	80	100
d5 _{f7}	26	32	38	46	57	72	94	116
L6	2	2	2	2	2	2	2	2



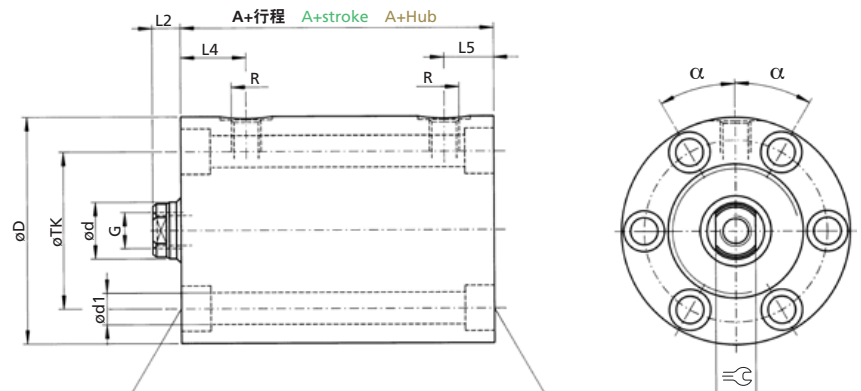
原则上, 可以根据客户需求来订制特殊液缸。请联系我们。
 Additional options and special design requirements are available upon request for each cylinder type. Please contact us!
 Weitere Optionen sowie Sonderausführungen nach Kundenwunsch sind bei jedem Zylindertyp grundsätzlich möglich. Bitte kontaktieren Sie uns.

短行程 Short stroke Kurzer Hub
RZ 500 - 01 / 02

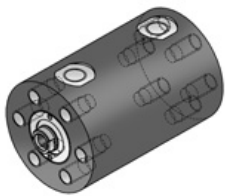
额定压力, 静态 Nominal pressure, static Nenndruck, statisch
500 bar (7200 PSI)



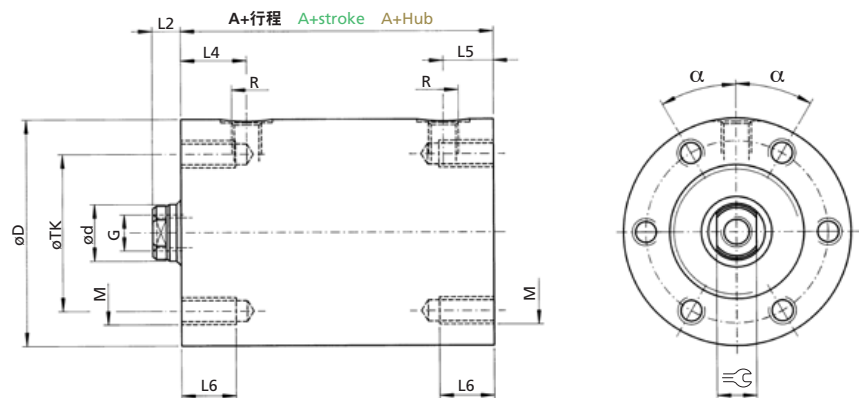
结构 01
 Style 01
 Bauform 01



用于 DIN EN ISO 4762 的沉孔
 Counterbore for DIN EN ISO 4762
 Senkung für DIN EN ISO 4762



结构 02
 Style 02
 Bauform 02



订购名称 (示例)
 Order specification (example)
 Bestellbezeichnung (Beispiel)

RZ 500 / RZ 320 50 / 32. 01. 201. 16

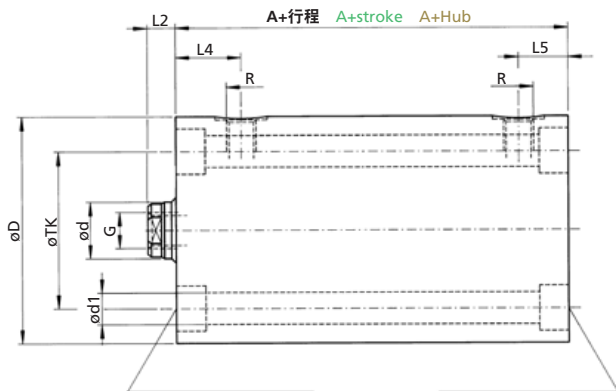
RZ 500 RZ 320

活塞 Ø Piston Ø Kolben Ø	活塞杆 Ø (d) Rod Ø (d) Stangen Ø (d)	固定方式 Mounting mode Bauform	功能类型 Operation mode Funktionsart	行程 Stroke Hub		可选配件 Option Option	A	A	D	d1	L2	L4	
				最小冲程 Min. stroke Min. Hub	标准 Standard Standard								客户需求 Customer request Kundenwunsch
				201	RZ 500								RZ 320
16	10	01 02	201	9	≤100	-	V	50	-	60	4x6,5	6	18
20	12	01 02	201	9	≤100	>100-200	E	52	63	60	4x6,5	7	20
25	16	01 02	201	7	≤100	>100-200	E	54	70	65	6x6,5	7	20
32	20	01 02	201	8	≤100	>100-200	E	58	78	75	6x8,5	10	24
40	25	01 02	201	5	≤100	>100-200	E...NF	62	89	90	6x10,5	10	25
50	32	01 02	201	5	≤100	>100-200	E...NF	72	97	100	6x10,5	10	30
63	40	01 02	201	7	≤100	>100-200	Z	83	112	125	6x13	14	33
80	50	01 02	201	7	≤130	>130-200	Z	95	131	160	6x17	14	41
100	60	01 02	201	7	≤130	>130-200	Z	100	133	200	6x21	15	44

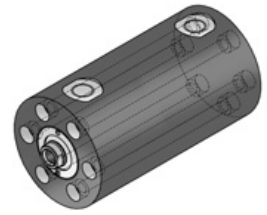
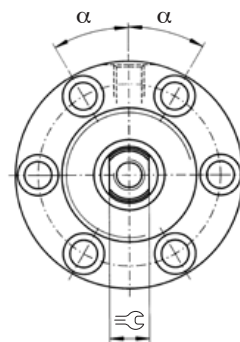
保留技术更改权利
 Subject to change without notice
 Technische Änderungen vorbehalten

尺寸单位 mm
 Dimensions in mm
 Maße in mm

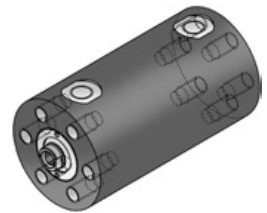
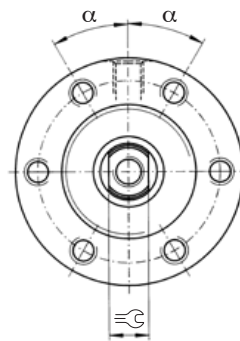
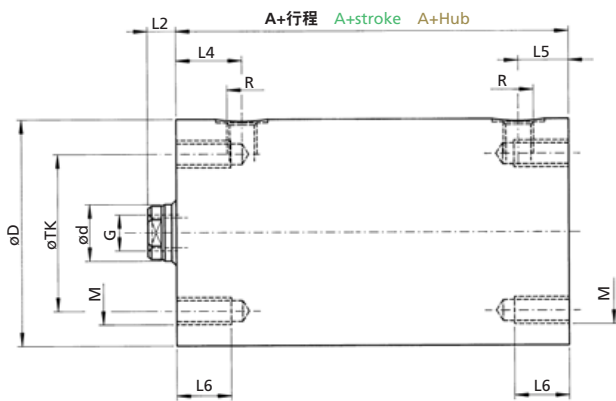
计算基础参见 AHP 信息
 Calculation based on "Information from AHP"
 Berechnungsgrundlage siehe ahp informiert



用于 DIN EN ISO 4762 的沉孔
Counterbore for DIN EN ISO 4762
Senkung für DIN EN ISO 4762



结构 01
Style 01
Bauform 01



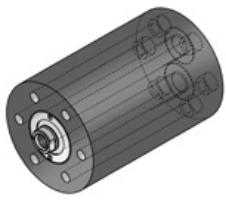
结构 02
Style 02
Bauform 02

RZ 500 RZ 320

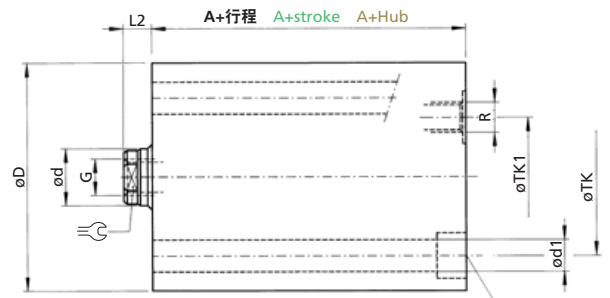
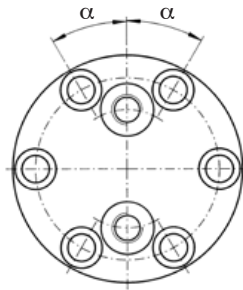
L5	L5	L6	M	α	R	☞	TK	G x 深度 G x depth G x Tiefe
18	-	15	4xM6	45°	G 1/4"	8	44	M6x12
18	20	15	4xM6	45°	G 1/4"	10	46	M8x12
18	20	15	6xM6	30°	G 1/4"	13	50	M10x15
19	24	18	6xM8	30°	G 1/4"	17	58	M12x15
19	25	18	6xM10	30°	G 1/4"	21	70	M16x25
19	30	20	6xM10	30°	G 1/4"	26	80	M20x30
23	33	20	6xM12	30°	G 1/2"	32	100	M27x40
25	41	25	6xM16	30°	G 1/2"	41	130	M30x40
28	44	30	6xM20	30°	G 1/2"	-	160	M42x60

短行程 Short stroke Kurzer Hub
RZ 500 – 03 / 04

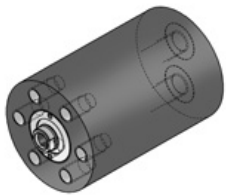
额定压力, 静态 Nominal pressure, static Nenndruck, statisch
400 bar (5800 PSI)



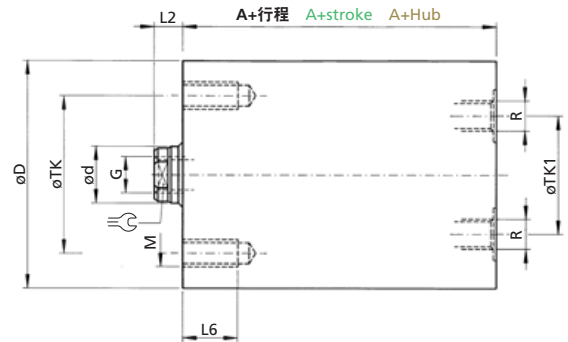
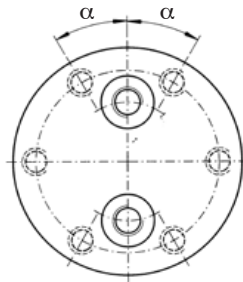
结构 03
 Style 03
 Bauform 03



用于 DIN EN ISO 4762 的沉孔
 Counterbore for DIN EN ISO 4762
 Senkung für DIN EN ISO 4762



结构 04
 Style 04
 Bauform 04



订购名称 (示例)
 Order specification (example)
 Bestellbezeichnung (Beispiel)

RZ 500 / RZ 320 50 / 32. 03. 201. 16

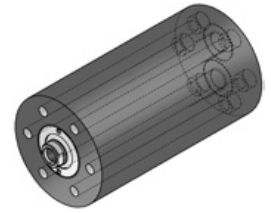
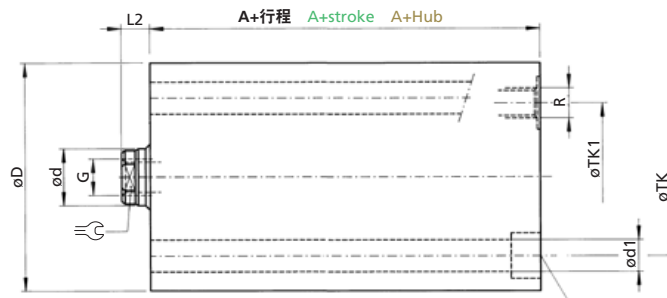
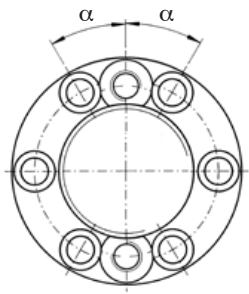
RZ 500 RZ 320

活塞 Ø Piston Ø Kolben Ø	活塞杆 Ø (d) Rod Ø (d) Stangen Ø (d)	固定方式 Mounting mode Bauform	功能类型 Operation mode Funktionsart	行程 Stroke Hub		可选配件 Option Option	A	A	D	d1	L2	L6		
				最小冲程 Min. stroke Min. Hub	标准 Standard Standard								客户需求 Customer request Kundenwunsch	
				201									RZ 500	RZ 320
16	10	03 04	201	4	≤100	-	50	-	60	4x6,5	6	15		
20	12	03 04	201	4	≤100	-	52	-	60	4x6,5	7	15		
25	16	03 04	201	4	≤100	-	54	-	65	6x6,5	7	15		
32	20	03 04	201	4	≤100	>100-200	58	78	75	6x8,5	10	18		
40	25	03 04	201	5	≤100	>100-200	62	89	90	6x10,5	10	18		
50	32	03 04	201	5	≤100	>100-200	72	97	100	6x10,5	10	20		
63	40	03 04	201	5	≤100	>100-200	83	112	125	6x13	14	20		
80	50	03 04	201	7	≤130	>130-200	95	131	160	6x17	14	25		
100	60	03 04	201	7	≤130	>130-200	100	133	200	6x21	15	30		

保留技术更改权利
 Subject to change without notice
 Technische Änderungen vorbehalten

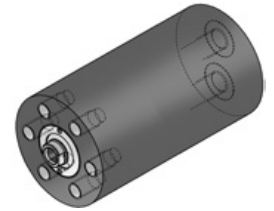
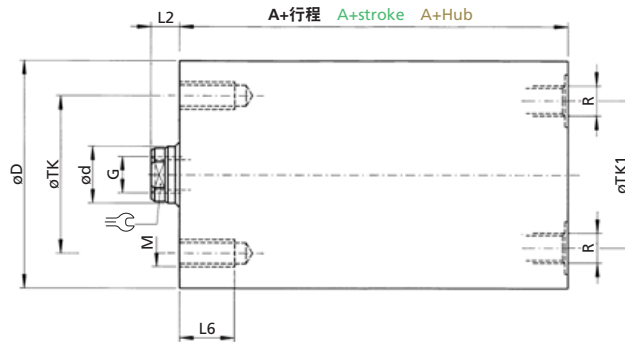
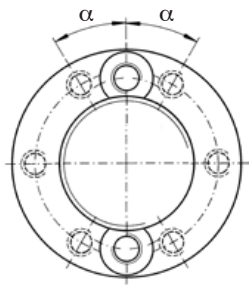
尺寸单位 mm
 Dimensions in mm
 Maße in mm

计算基础参见 AHP 信息
 Calculation based on "Information from AHP"
 Berechnungsgrundlage siehe ahp informiert



结构 03
Style 03
Bauform 03

用于 DIN EN ISO 4762 的沉孔
Counterbore for DIN EN ISO 4762
Senkung für DIN EN ISO 4762



结构 04
Style 04
Bauform 04

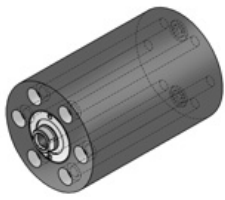
RZ 500 RZ 320

RZ 500 RZ 320

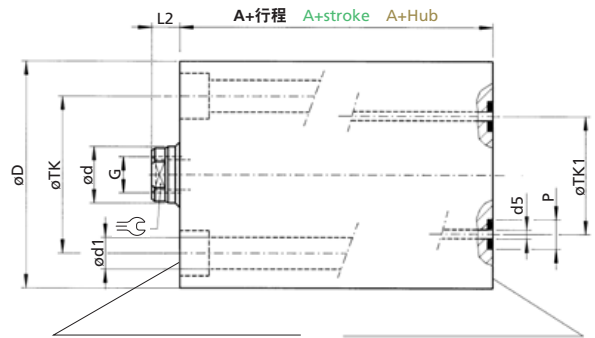
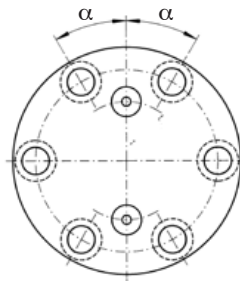
M	α	R	R		TK	TK 1	TK1	G x 深度 G x depth G x Tiefe
4xM6	45°	G 1/4"	-	8	44	28	-	M6x12
4xM6	45°	G 1/4"	-	10	46	32	-	M8x12
6xM6	30°	G 1/4"	-	13	50	26	-	M10x15
6xM8	30°	G 1/4"	G 1/8"	17	58	36	58	M12x15
6xM10	30°	G 1/4"	G 1/4"	21	70	44	70	M16x25
6xM10	30°	G 1/4"	G 1/4"	26	80	56	80	M20x30
6xM12	30°	G 1/2"	G 3/8"	32	100	68	100	M27x40
6xM16	30°	G 1/2"	G 1/2"	41	130	98	130	M30x40
6xM20	30°	G 1/2"	G 1/2"	-	160	110	160	M42x60

短行程 Short stroke Kurzer Hub
RZ 500 – 05 / 06

额定压力, 静态 Nominal pressure, static Nenndruck, statisch
400 bar (5800 PSI)

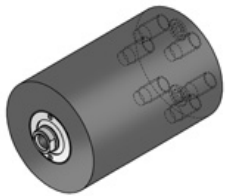


结构 05
Style 05
Bauform 05

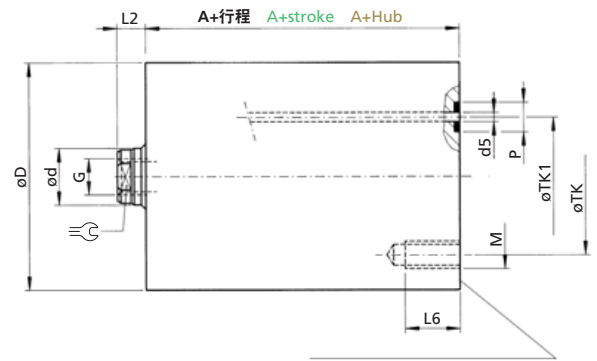
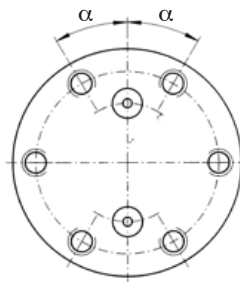


用于 DIN EN ISO 4762 的沉孔
Counterbore for DIN EN ISO 4762
Senkung für DIN EN ISO 4762

接触面 $R_a \leq 0,8$ 以及 $\square \leq 0,05$
Contact surface $R_a \leq 0,8$ and $\square \leq 0,05$
Gegenfläche $R_a \leq 0,8$ und $\square \leq 0,05$



结构 06
Style 06
Bauform 06



接触面 $R_a \leq 0,8$ 以及 $\square \leq 0,05$
Contact surface $R_a \leq 0,8$ and $\square \leq 0,05$
Gegenfläche $R_a \leq 0,8$ und $\square \leq 0,05$

订购名称 (示例)
Order specification (example)
Bestellbezeichnung (Beispiel)

RZ 500 / RZ 320 50 / 32. 05. 201. 16

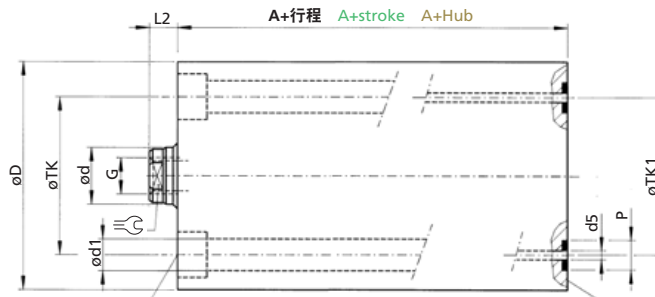
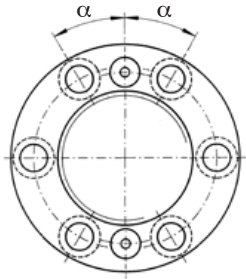
RZ 500 RZ 320

活塞 Ø Piston Ø Kolben Ø	活塞杆 Ø (d) Rod Ø (d) Stangen Ø (d)	固定方式 Mounting mode Bauform	功能类型 Operation mode Funktionsart	行程 Stroke Hub			可选配件 Option Option	A	A	D	d1	d5	L2	L6	
				最小冲程 Min. stroke Min. Hub	标准 Standard Standard	客户需求 Customer request Kundenwunsch									
						RZ 500									RZ 320
16	10	05	06	201	4	≤100	-	V	50	-	60	4x6,5	4	6	15
20	12	05	06	201	4	≤100	>100-200	V	52	63	60	4x6,5	4	7	15
25	16	05	06	201	4	≤100	>100-200	V	54	70	65	6x6,5	4	7	15
32	20	05	06	201	4	≤100	>100-200	E	58	78	75	6x8,5	4	10	18
40	25	05	06	201	5	≤100	>100-200	E	62	89	90	6x10,5	4	10	18
50	32	05	06	201	5	≤100	>100-200	E...NF	72	97	100	6x10,5	6	10	20
63	40	05	06	201	5	≤100	>100-200	Z	83	112	125	6x13	6	14	20
80	50	05	06	201	7	≤130	>130-200	Z	95	131	160	6x17	6	14	25
100	60	05	06	201	7	≤130	>130-200	Z	100	133	200	6x21	8	15	30

保留技术更改权利
Subject to change without notice
Technische Änderungen vorbehalten

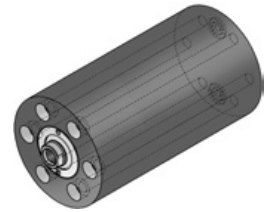
尺寸单位 mm
Dimensions in mm
Maße in mm

计算基础参见 AHP 信息
Calculation based on "Information from AHP"
Berechnungsgrundlage siehe ahp informiert

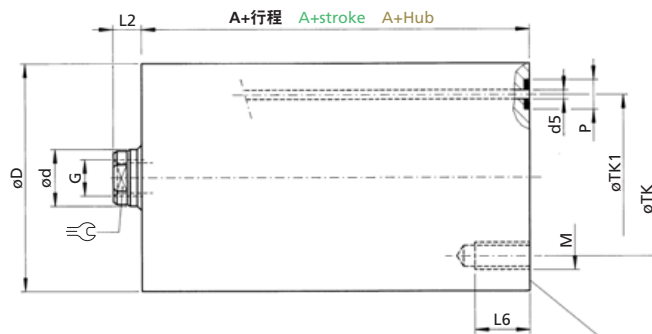
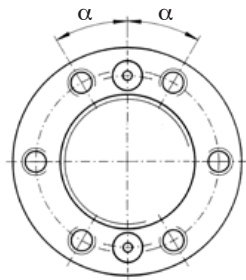


用于 DIN EN ISO 4762 的沉孔
Counterbore for DIN EN ISO 4762
Senkung für DIN EN ISO 4762

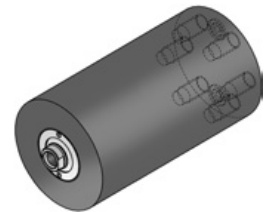
接触面 $R_a \leq 0,8$ 以及 $\nabla \leq 0,05$
Contact surface $R_a \leq 0,8$ and $\nabla \leq 0,05$
Gegenfläche $R_a \leq 0,8$ und $\nabla \leq 0,05$



结构 05
Style 05
Baiform 05



接触面 $R_a \leq 0,8$ 以及 $\nabla \leq 0,05$
Contact surface $R_a \leq 0,8$ and $\nabla \leq 0,05$
Gegenfläche $R_a \leq 0,8$ und $\nabla \leq 0,05$



结构 06
Style 06
Baiform 06

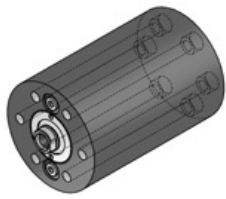
RZ 500 RZ 320

M	α	P		TK	TK1	TK1	G x 深度 G x depth G x Tiefe	O 形圈* O-seal* O-Ring*
4xM6	45°	10,6	8	44	28	-	M6x12	8x1,5
4xM6	45°	12	10	46	30	46	M8x12	8x2
6xM6	30°	13	13	50	40	50	M10x15	9x2
6xM8	30°	13	17	58	44	58	M12x15	9x2
6xM10	30°	13	21	70	52	70	M16x25	9x2
6xM10	30°	13	26	80	64	76	M20x30	9x2
6xM12	30°	13	32	100	80	100	M27x40	9x2
6xM16	30°	13	41	130	100	130	M30x40	9x2
6xM20	30°	15	-	160	120	160	M42x60	11x2

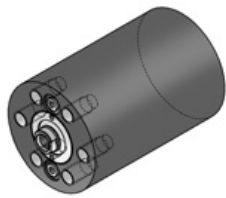
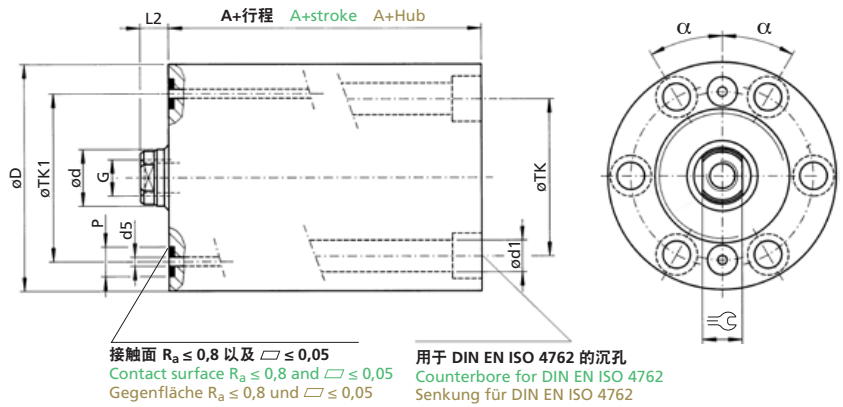
* 随附提供
* Is included
* Wird mitgeliefert

短行程 Short stroke Kurzer Hub
RZ 500 - 07 / 08

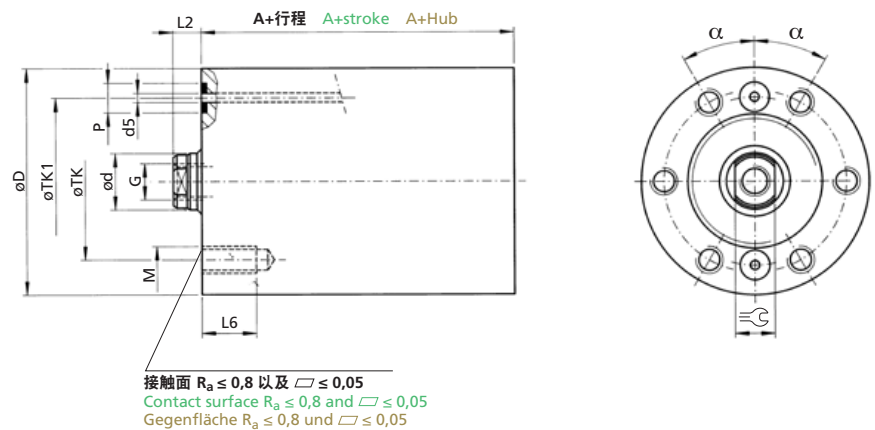
额定压力, 静态 Nominal pressure, static Nenndruck, statisch
400 bar (5800 PSI)



结构 07
Style 07
Bauform 07



结构 08
Style 08
Bauform 08



订购名称 (示例)
Order specification (example)
Bestellbezeichnung (Beispiel)

RZ 500 50 / 32. 07. 201. 16
RZ 320

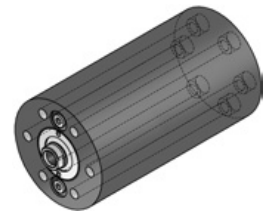
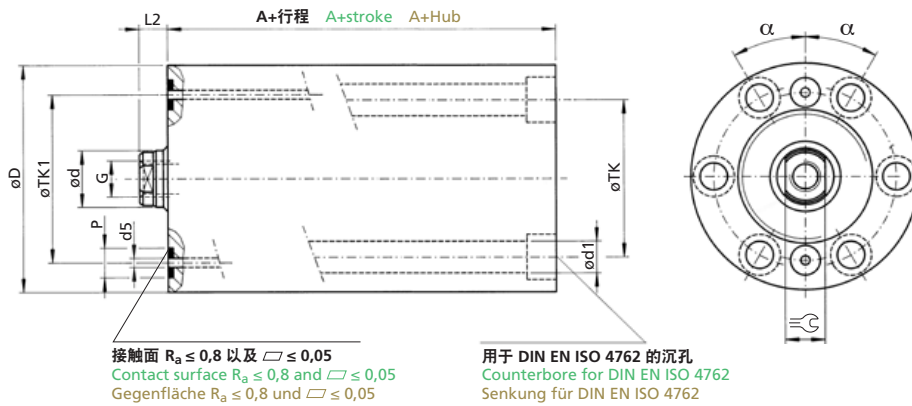
RZ 500 RZ 320

活塞 Ø Piston Ø Kolben Ø	活塞杆 Ø (d) Rod Ø (d) Stangen Ø (d)	固定方式 Mounting mode Bauform	功能类型 Operation mode Funktionsart	行程 Stroke Hub		可选配件 Option Option	A	A	D	d1	d5	L2	L6		
				最小冲程 Min. stroke Min. Hub	标准 Standard Standard									客户需求 Customer request Kundenwunsch	
				201										RZ 500	RZ 320
16	10	07 08	201	4	≤100	-	50	-	60	4x6,5	4	6	15		
20	12	07 08	201	4	≤100	>100-200	52	63	60	4x6,5	4	7	15		
25	16	07 08	201	4	≤100	>100-200	54	70	65	6x6,5	4	7	15		
32	20	07 08	201	4	≤100	>100-200	58	78	75	6x8,5	4	10	18		
40	25	07 08	201	5	≤100	>100-200	62	89	90	6x10,5	4	10	18		
50	32	07 08	201	5	≤100	>100-200	72	97	100	6x10,5	6	10	20		
63	40	07 08	201	5	≤100	>100-200	83	112	125	6x13	6	14	20		
80	50	07 08	201	7	≤130	>130-200	95	131	160	6x17	6	14	25		
100	60	07 08	201	7	≤130	>130-200	100	133	200	6x21	8	15	30		

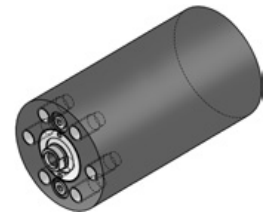
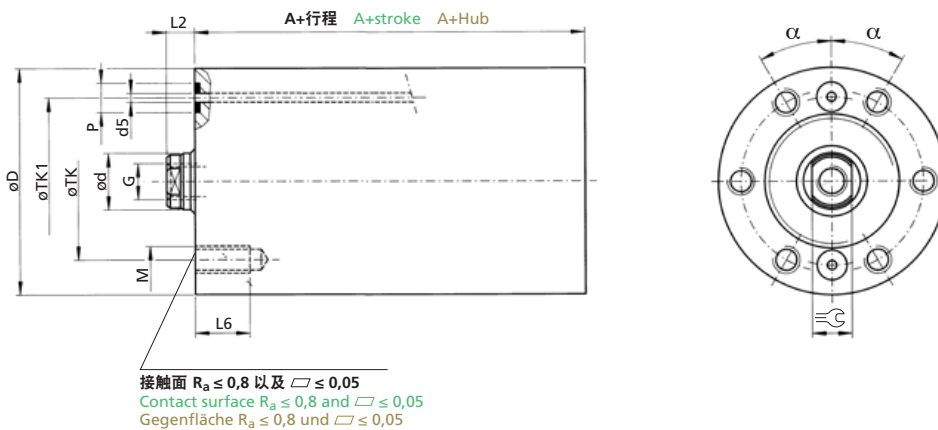
保留技术更改权利
Subject to change without notice
Technische Änderungen vorbehalten

尺寸单位 mm
Dimensions in mm
Maße in mm

计算基础参见 AHP 信息
Calculation based on "Information from AHP"
Berechnungsgrundlage siehe ahp informiert



结构 07
Style 07
Bauform 07



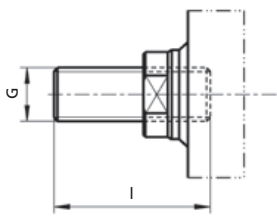
结构 08
Style 08
Bauform 08

M	α	P		TK	TK1	G x 深度 G x depth G x Tiefe	O 形圈* O-seal* O-Ring*
4xM6	45°	10,6	8	44	42	M6x12	8x1,5
4xM6	45°	12	10	46	46	M8x12	8x2
6xM6	30°	13	13	50	50	M10x15	9x2
6xM8	30°	13	17	58	58	M12x15	9x2
6xM10	30°	13	21	70	70	M16x25	9x2
6xM10	30°	13	26	80	76	M20x30	9x2
6xM12	30°	13	32	100	100	M27x40	9x2
6xM16	30°	13	41	130	130	M30x40	9x2
6xM20	30°	15	-	160	160	M42x60	10x2

* 随附提供
* Is included
* Wird mitgeliefert

附件, 用于 RZ

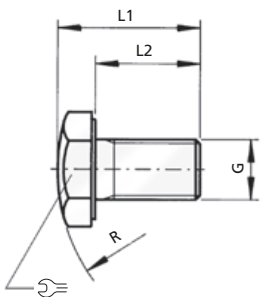
螺柱 Headless pin Gewindestift



货号 Part number Artikelnummer	活塞 Ø Piston Ø Kolben Ø	G	I
016253	16	M6	25
016266	25	M10	30
016270	32	M12	35
016274	40	M16	50
016276	50	M20	60
016280	63	M27	80
016281	80	M30	80
016282	100	M42	120

尺寸单位 mm Dimensions in mm Maße in mm

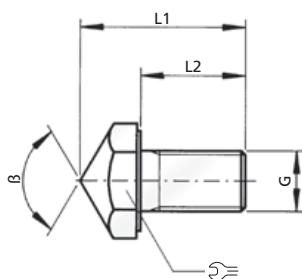
压力件 Pressure screw Druckstück



货号 Part number Artikelnummer	G	L1	L2	R	≡C
028678	M6	21	11	20	10
028679	M10	24	14	35	17
028680	M12	24	14	45	19
028681	M16	34	24	60	24
028682	M20	38	28	60	30
028683	M27	55	38	100	41
028684	M30	57	38	100	46
028685	M42	81	55	140	65

尺寸单位 mm Dimensions in mm Maße in mm

压力件 Pressure screw Druckstück



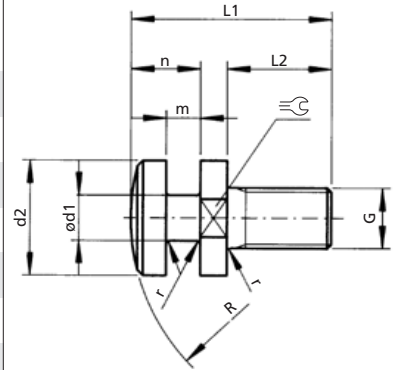
货号 Part number Artikelnummer	G	L1	L2	β°	≡C
028657	M6	23	11	90	10
028658	M10	29	14	90	17
028659	M12	29	14	120	19
028660	M16	39	24	120	24
028661	M20	43	28	120	30
028662	M27	58	38	120	41
028663	M30	63	38	120	46
028664	M42	87	55	120	65

尺寸单位 mm Dimensions in mm Maße in mm

联轴器 Coupling Kupplung

货号 Part number Artikelnummer	G	L1	L2	d1	d2	m	n	R	r	≡	F stat [kN]	F dyn [kN]
133003	M6	24,5	10	6	12	5	10	230	1	10	4,2	2,6
028665	M10	31,5	14	10	20	6,5	12	320	1	17	12,9	8,1
028666	M12	31,5	14	10	20	6,5	12	320	1	17	17,6	11
028667	M16	44	24	16	25	7	13	400	1	22	30,2	18,9
028668	M20	56	28	18	32	10	20	500	1	27	45,9	28,7
028669	M27	74	38	24	40	13	25	630	1,5	36	85	53,1
028670	M30	92	38	30	52	19	38	800	2	46	97,8	61,1
057008	M42	145	55	45	70	30	60	800	2	-	186	116,2

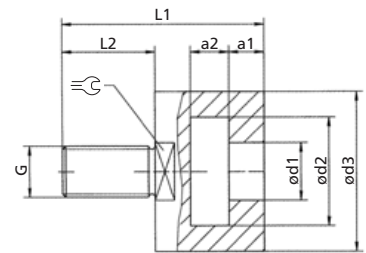
由 30Cr Ni Mo8 制成的联轴器 尺寸单位 mm Dimensions in mm Maße in mm
 Coupling of 30Cr Ni Mo8
 Kupplungen aus 30Cr Ni Mo8



配合件 Counterpart Gegenstück

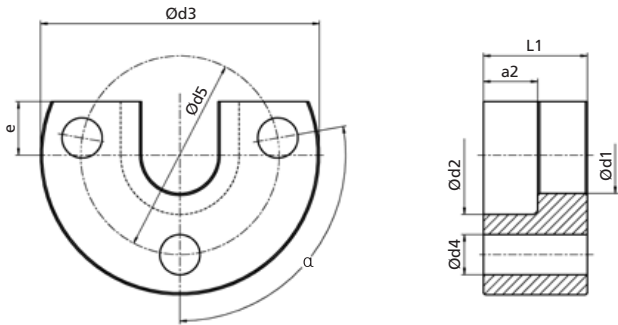
货号 Part number Artikelnummer	G	L1	L2	a1	a2	d1	d2	d3	≡	F stat [kN]	F dyn [kN]
078453	M10	31,5	14	6	5,7	11	21	32	26	13	8,1
078454	M12	31,5	14	6	5,7	11	21	32	26	17,7	11,1
078455	M16	45	24	6,5	6,2	17	26	37	32	30,2	18,9
078456	M20	58	28	9,5	10,2	19	33	47	41	45,9	28,7
078457	M27	78	38	12,5	12,2	25	41	57	50	84,7	52,9
078458	M30	95	38	18,5	19,2	31	52	74	65	97,6	61

尺寸单位 mm Dimensions in mm Maße in mm



附件, 用于 RZ

联轴器的对应件 Counterpart coupling Kupplung Gegenstück



货号 Part number Artikelnummer	适用于联轴器 Suitable for coupling Passend für Kupplung	L1	a2	d1	d2	d3	d4	d5	e	α[°]	F _{max} [kN]
275702	M6	9,2	5,2	7	13	29	4,5	20	7	100	3
275701	M8	10,2	6,2	9	17	36	5,5	26	9	100	5
275700	M10	11,2	5,7	11	21	52	6,5	38	12	100	7,2
275699	M12	11,2	5,7	11	21	59	8,5	42	12	100	12,2
275698	M16	12,2	6,2	17	27	63	8,5	45	14	100	19,1
275697	M20	19,2	10,2	19	33	78	10,5	55	18	100	28,9
275696	M27	24,2	12,2	25	42	92	13	68	21	100	46,5
275695	M30	37,2	19,2	31	55	115	17	86	27	100	76,5
275385	M42	59,2	30,2	46	79	150	21	111	36	100	125,6

使用强度等级12.9的螺丝。

Use screws of strength class 12.9.

Schrauben der Festigkeitsklasse 12.9 benutzen

尺寸单位 mm Dimensions in mm Maße in mm

备件 RZ

全套密封组件 Seal kit complete Dichtsatz komplett



结构*
Style*
Baiform*

- 01
- 02
- 03
- 04
- 05
- 06
- 07
- 08

规格 Ø Piston Ø Kolben Ø	功能类型 Operation mode Funktionsart	标准密封组件 Standard seal kit Standard-Dichtsatz		Viton® 密封组件 Viton®-seals Viton®-Dichtsatz	
		货号 Part number Art.-Nr.	货号 Part number Art.-Nr.	货号 Part number Art.-Nr.	货号 Part number Art.-Nr.
		RZ 500		RZ 320	
16	201	013286	-	013287	-
25	201	013322	078330	013323	062268
32	201	013411	053528	013412	068144
40	201	013543	051110	026816	063236
50	201	013676	053426	013677	054920
63	201	013832	053077	013833	070150
80	201	013963	026245	013964	070151
100	201	014059	061489	035442	109676

* 参见页码 3/3
* See page 3/3
* Siehe Seite 3/3

所有密封组件都备有库存
All seal kits in stock
Alle Dichtsätze ab Lager lieferbar

尺寸单位 mm
Dimensions in mm
Maße in mm

带密封件的全套活塞杆导向 Rod guide complete including seals
 Verschraubung komplett mit Dichtungen



结构*
 Style*
 Bauform*

- 01
- 02
- 03
- 04
- 05
- 06
- 07
- 08

活塞杆直径 Piston Ø Kolben Ø	功能类型 Operation mode Funktionsart	标准活塞杆导向 Rod guide complete Standard Standard-Verschraubung	Viton® 活塞杆导向 Rod guide complete Viton® Viton®-Verschraubung
		货号 Part number Art.-Nr.	货号 Part number Art.-Nr.
16	201	042485	080806
25	201	092861	097101
32	201	041671	057340
40	201	041752	044272
50	201	042986	070826
63	201	042987	078328
80	201	044046	058371
100	201	044047	078329

* 参见页码 2/3
 * See page 2/3
 * Siehe Seite 2/3

所有活塞杆导向都备有库存
 All rod guides in stock
 Alle Verschraubungen ab Lager lieferbar

尺寸单位 mm
 Dimensions in mm
 Maße in mm