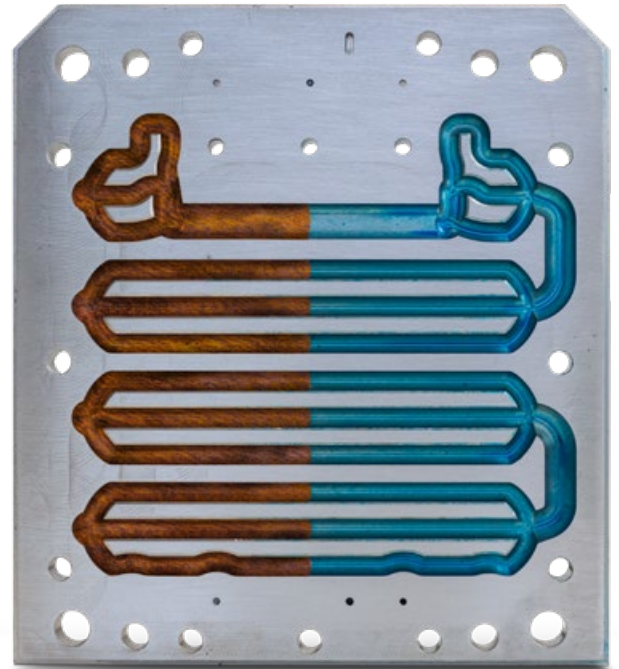


CONTURA COATING



The function of a contour-following tempered tool insert depends on an unimpaired surface. That is why we now also offer our own channel coating as an option. Benefit now from the new CONTURA COATING.

Advantages CONTURA COATING:

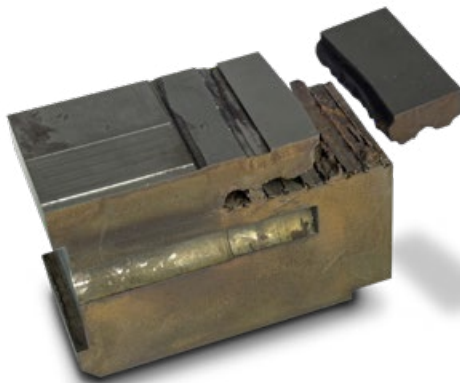
- Temperature resistant up to 240°C
- polymer-based system
- Coating thicknesses 0.03 - 0.05
- high flexibility
- high adhesion
- available directly from CONTURA® as an option

Durable function

Economic efficiency due to:

- avoidance of downtimes
- stable process
- reduction of cleaning intervals

Avoidance of damage of this kind!



Here you can see severe corrosion damage that led to the breakage of the tool insert.



The advantages at a glance:

- polymer-based system
- Layer thicknesses 0.03-0.05 mm
- Temperature resistant up to 240°C
- High flexibility, high adhesion, hard surface
- No masking of the cavity necessary
- only the channels are coated
- subsequent coating after cleaning also possible



大中华区经销商



苏州市默克尔液压系统有限公司
Suzhou Merkle Hydraulic System Co., Ltd.
苏州市工业园区唯新路50号益创科技园11幢2楼201室, 邮编215122
Room 201, 2nd Floor, 11th Building, Yichuang Science Park,
#50 Weixin Road, SIP, Suzhou 215122, P.R. China

Phone: +86 512 6296 9386
Mobile: +86 150 1385 6625
Email: info@ahpmerklechina.com

Note: The polymer-based CONTURA coating must not come into contact with highly acidic cleaning agents. If in doubt, please contact CONTURA in advance.